



# THE MASON BLOCK

62

Portland's Next  
Residential Renaissance

Unit 401 SOLD

**2 Bedroom | 2 Bath**

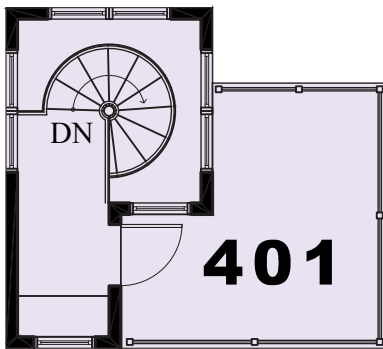
1,385 Square Feet

223 SF Deck

1 Covered Parking

8'-6" Ceiling

\*Areas shown are for marketing only,  
final areas and heights may vary.



[THEMASONBLOCK.COM](http://THEMASONBLOCK.COM)

**FOR MORE INFORMATION**

Visit our Sales Center at  
15 Middle St. Ste. A2, Portland, ME

Sandra Johnson  
+1 (207) 415-2128

Gail Landry  
+1 (207) 650-8893



62  
INDIA ST