



THE MASON BLOCK

62

Portland's Next
Residential Renaissance

Unit 406 SOLD

3 Bedroom | 2 Bath

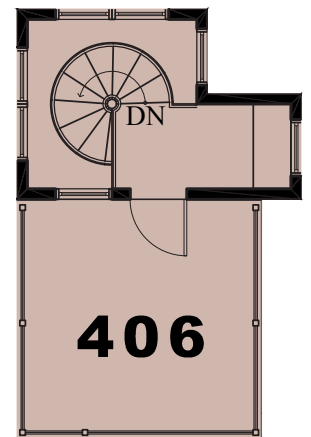
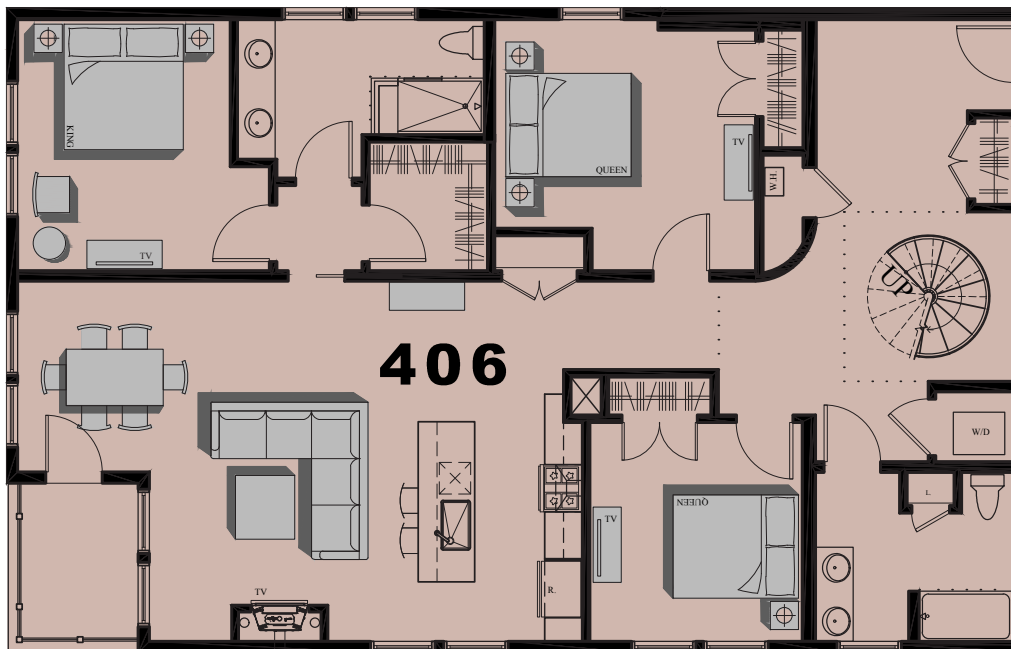
1,768 Square Feet

1 Covered Parking

227 SF Deck

8'-6" Ceiling

*Areas shown are for marketing only,
final areas and heights may vary.



THEMASONBLOCK.COM

FOR MORE INFORMATION

Visit our Sales Center at
15 Middle St. Ste. A2, Portland, ME

Sandra Johnson
+1 (207) 415-2128

Gail Landry
+1 (207) 650-8893



62
INDIA ST