



THE MASON BLOCK

62

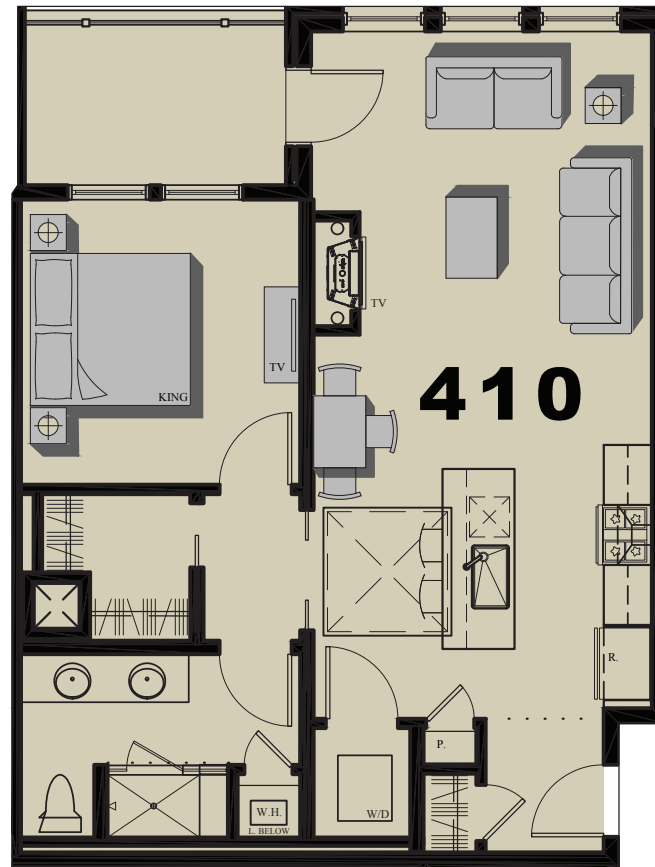
Portland's Next
Residential Renaissance

Unit 410 SOLD

1 Bedroom | 1 Bath

- 864 Square Feet
- 79 SF Deck
- 0 Covered Parking
- 8'-6" Ceiling

*Areas shown are for marketing only, final areas and heights may vary.



THEMASONBLOCK.COM

FOR MORE INFORMATION

Visit our Sales Center at
15 Middle St. Ste. A2, Portland, ME

Sandra Johnson
+1 (207) 415-2128

Gail Landry
+1 (207) 650-8893



62
INDIA ST